

# MVLA

---

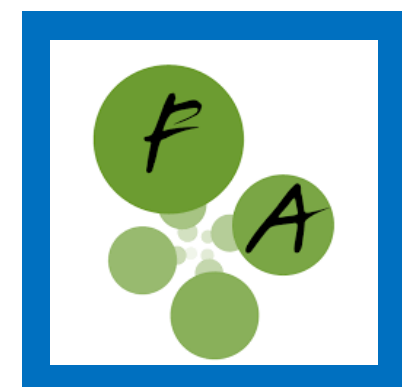
HIGH SCHOOL DISTRICT



FINAL

# MASTER PLAN

3 March 2018



# Table of Contents

Table of Contents.....	1
Acknowledgements .....	3
Introduction .....	4
Background .....	5
Findings .....	6
Master Plan Development .....	7
Executive Summary.....	8
Master Plan Goals .....	9
Costs by Site Summary.....	10
Enrollment Projections & Potential Future Residential Developments .....	11
Added Classrooms by Site - Summary .....	11
High School Classroom and Support Space Comparison.....	12
Mountain View High School.....	13
Mountain View HS Existing Campus .....	14
MVHS Master Plan .....	15
MVHS Overall Campus Master Plan.....	21
MVHS Cost Estimate .....	22
Los Altos High School .....	24
Los Altos HS Existing Campus.....	25
LAHS Master Plan.....	26
LAHS Overall Campus Master Plan .....	32

LAHS Cost Estimate .....	33
Freestyle Academy of Communication Arts & Technology .....	35
Freestyle Academy Master Plan & Cost Estimate.....	37
Alta Vista High School .....	38
Alta Vista HS Existing Campus & Cost Estimate .....	39
MVLA Adult Education Center .....	40
Adult Education Existing Campus & Cost Estimate.....	41
MVLA District Office.....	42
District Office Existing Site & Cost Estimate .....	43

Appendices

REFERENCED DOCUMENTS INCLUDING THE FACILITY ASSESSMENT AND EDUCATION SPECIFICATIONS MAY BE FOUND AT:

<http://www.mvla.net/District/Department/113-Business-Services>

# Acknowledgements

The task of developing the MVLA Facilities Master Plan could not have been accomplished without the dedication and contributions of the staff and community of the Mountain View Los Altos High School District. We would like to thank the following people for their contribution of time, leadership, and direction.

## **DISTRICT**

Dr. Jeff Harding, Superintendent  
Mike Mathiesen, Associate Superintendent

## **CONSTRUCTION MANAGEMENT**

Rick Kramer, President Kramer Project  
Development Co. Inc.

## **QUATTROCCHI KWOK ARCHITECTS**

Mark Quattrocchi, Principal  
Debra McGuire, Associate  
Justine Weigl, Intern Architect

In addition, many community members participated in master plan public presentations. We would like to take this opportunity to thank all participants for their time, effort, and insights.

# Introduction

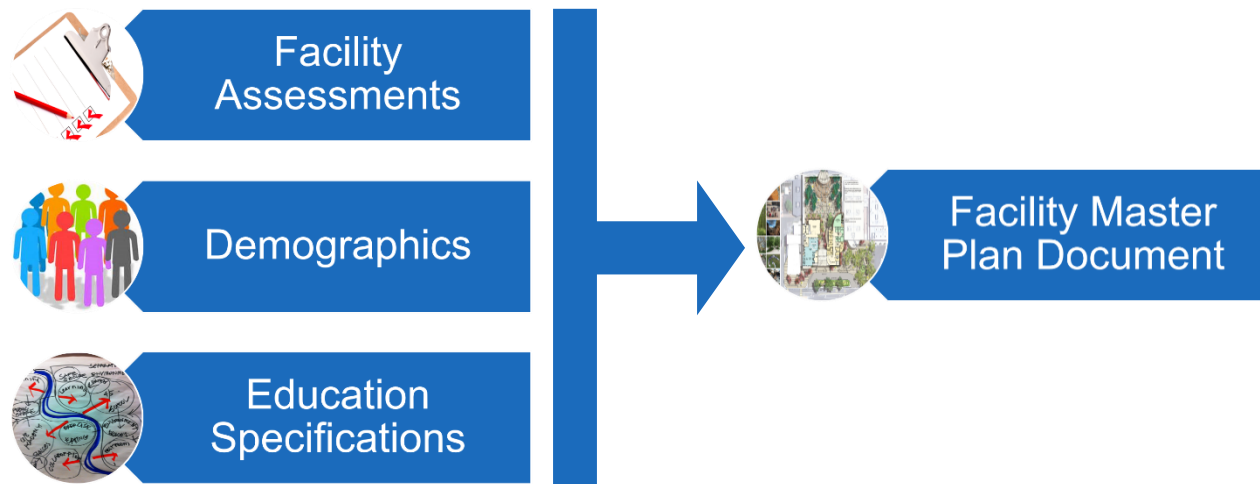
Mountain View Los Altos High School District (MVLA) selected Quattrocchi Kwok Architects to create a comprehensive Facilities Master Plan (FMP) for the District. The first step in this process was the creation of the Education Specifications. Education Specifications identify and standardize required facilities to meet the District's intended educational program at each school. The MVLA Education Specifications were published in a final draft dated May 11, 2017.

Additionally, a physical facilities assessment of each site was performed to identify facility deficiencies and recommend improvements for their current uses. The MVLA Facilities Assessment was published in a final draft dated September 2016.

In the Master Planning Phase, QKA worked closely with a Site Committee at each school. The goal was to create a long-term Facilities Master Plan and identify the best way for each school to meet or exceed the educational goals, and house demographic growth at their school while addressing physical short comings. It is important to remember that Master Planning is a comprehensive process that addresses improvements over many years.

# Background

The MVLA Facilities Master Plan blends the work of the Facility Assessment and Education Specifications into a proposed facilities improvement plan for the District. The goal is to transform the district’s facilities into 21<sup>st</sup> century learning environments that support all MVLA’s students and staff.



Mountain View Los Altos High School District has two comprehensive high schools – Mountain View and Los Altos. Freestyle Academy of Communication Arts & Technology houses a specialized creative program. Additional facilities include Alta Vista High School, an alternative education program, and the Adult Education Center.

MVLA’s last facilities improvement program was funded by Measure A in 2010. As noted in the Facilities Assessment, the Measure A bond program provided important modernizations and upgrades at the high schools. However, it was modest in nature and there are maintenance issues that remain unaddressed as well as aging portables that require replacement.

# Findings

## FACILITIES ASSESSMENT GOALS

- Improve all teaching spaces to meet education specification and facility assessment needs
- Improve classrooms and support facilities including food service, libraries, physical education and administration
- Improve outdoor student gathering areas
- Replace aging portable classrooms with permanent construction

## DEMOGRAPHIC PROJECTION IMPACTS

- The District commissioned the June 2017 Demographic Analysis & Enrollment Projections report by Jack Schreder & Associates. The report is important in determining projected classroom needs, as detailed below:
  - Fall 2017 enrollment at MVHS and LAHS 4,297
  - Unused student capacity MVHS and LAHS 160
  - Total Current Capacity MVHS and LAHS 4,457
  - Forecast peak enrollment in academic year 2021/22 5,023
  - Projected students beyond Current Capacity 567
  - Using an average of one-classroom for 25-students 23 additional classrooms needed at MVHS and LAHS
- This master plan provides 29 additional classrooms or six more than required for the current peak enrollment projection.
- This increase in students also requires expanding core facilities such as administration, cafeterias, gyms, and libraries.

## EDUCATIONAL SPECIFICATIONS SUMMARY

- Provide sufficient classrooms
- Replace, enlarge, or compensate for existing undersized classrooms
- Support project based learning
- Provide a variety of student presentation spaces
- Enhance and continue to support outdoor learning including school gardens

The District would like to reinforce innovative educational programs that support student learning and achievement. Therefore, modernizations and new construction should provide spaces that fully accommodate the multiple approaches to curriculum required for 21<sup>st</sup> century learning.

# Master Plan Development

The Master Planning process for MVLA included preliminary presentations at each school site to staff, students, parents, and community members. Their input, along with findings from both the Facilities Assessment, Enrollment Projections, and Education Specifications, were incorporated into the master plan for each site. During the community presentations, formal meeting minutes were not kept; instead each presentation responded to concerns as they were raised.

Introductory and a follow up site-specific Master Planning meetings were held at Mountain View High School and Los Altos High School for a total of six meetings. Another two meetings reviewed plans with the MVLA School Board Building Committee. There were two additional planning meetings with principals and district administration.

Quattrocchi Kwok Architects worked with Kramer Project Development Company to create Master Planning Worksheets that forecast costs of desired improvements. These were then reviewed by the District and School Board, refined and edited. In doing so, a Recommended Program Budget for a potential local bond measure was developed which balances priorities in phasing, funding, and educational goals. This required five presentations to the School Board in October, November and December 2017 and January 2018. The Master Plan and Program Budget was approved by the Board on January 22, 2018.

The Facilities Master Plan is a planning guide for facilities work now and into the future. It is not a short-term action plan. As a *living document*, it is anticipated the Plan will be revised and updated as information and priorities evolve.



# Executive Summary

The purpose of the Executive Summary is to summarize detailed information and present an overview of the FMP. The intent is to provide a concise view of the facilities issues and opportunities that the Mountain View Los Altos High School District faces.

The Executive Summary provides a concise view of all campuses to provide an all-encompassing vision of District facility needs.

# Master Plan Goals

The master planning process for the Mountain View Los Altos High School District has been shaped by the following themes:

- A minimum of 23-net additional classrooms at MVHS and LAHS for anticipated growth.
- New classrooms to replace outdated portables.
- Modernization of existing classrooms.
- Innovative Classrooms to house expanded programs in areas such as Engineering, Bio-Tech, Physiology
- Integrated Student Services and Wellness Center (Career, College and Health Counseling)
- Administration Services & Program Offices in a single building.
- Facilities to provide spaces that support the educational programs and goals of the District for academic excellence. These include:
  - Supporting classroom standards, with a strong technology backbone;
  - Supporting project-based learning with collaborative spaces of multiple sizes;
  - Designing appropriate learning environments for science, engineering, computer science, visual arts, special education, performing and visual arts.
- Expanding the Library and tutoring centers.
- Creating functional food service and dining areas.
- Athletic improvements at the existing gyms and providing an auxiliary gym.
- Meeting current codes and regulations, including requirements for accessibility, fire-life-safety and structural safety.
- Future improvements address maintenance upgrades and sustainability issues, such as energy use, day lighting, energy efficient building envelopes and innovative storm water treatment & retention.
- Replacing Freestyle Academy classroom buildings currently housed in aging portables.

# Costs by Site Summary

The Facilities Master Plan project budgets incorporate all findings of the Facility Assessments, Demographic Analysis, and Education Specifications reports. The Recommended Program Budget is tailored to reflect the Board’s priorities in scope, funding and schedule. The budgets are presented as budget allowance ranges because the actual budget will be driven by the final designs for each project.

Budget allowances shown are the Project Cost which allows for both the construction costs ("bid day budget") and non-construction costs. Construction costs are the cost of the construction contractors and construction site expenses incurred to perform the actual construction work. Non-construction costs include the necessary expenditures for design, engineering, construction document preparation, surveys, inspections, testing agency plan reviews, permitting and project management. Project costs include contingency and escalation allowances.

Detailed costs are provided for each site in the appropriate section. Further detail is provided in the Facility Assessment report.

PROJECT	Recommended Program Budget	
	Low Range	High Range
Mountain View High School	\$118,875,000	\$129,637,500
Los Altos High School	\$102,083,000	\$111,880,000
Up To 20-Additional Classrooms at MVHS & LAHS	\$ 29,200,000	\$ 32,000,000
New Freestyle Academy	\$ 14,320,000	\$ 15,750,000
Program Expenses	\$ 3,967,000	\$ 4,339,000
Program Contingency	\$ 13,224,000	\$ 14,464,000
<b>PROGRAM TOTALS</b>	<b>\$281,670,000</b>	<b>\$308,079,000</b>

**Other Master Plan Projects** (completed with other funds)

Alta Vista Facility Assessment Work	\$ 1,074,000	\$ 1,187,000
Adult Education Center Facility Assessment Work	\$ 760,000	\$ 840,000
District Office & Corp. Yard Facility Assessment Work	\$ 285,000	\$ 315,000

# Enrollment Projections & Potential Future Residential Developments

The District commissioned a demographic study in 2017 by Jack Schreder & Associates. Based on a 2021-22 peak enrollment of 5,023 MVHS and LAHS students, a minimum of 23-additonal classrooms are required at both schools.

**Future Developments:** Not included in enrollment projections and master plan classroom counts are the potential future residential developments listed below; as these developments are still in the planning stages. It is recommended that the District monitor these projects and work with City agencies to determine if additional classrooms are needed, should these projects come to fruition. The Executive Summary master plan budget provides an allowance for up to 20-additonal classrooms should additional teaching spaces be needed due to these or other future residential developments within the District.

## Potential Future Residential Developments:

- North Bayshore Development
- East Whisman Development
- NASA-Ames Development

## Added Classrooms by Site - Summary

### Mountain View High School Master Plan Site Classroom Count

New Classrooms/ Labs: 31

Classrooms Removed: 18

**NET CLASSROOMS: 13**

### Los Altos High School Master Plan Site Classroom Count

New Classrooms/ Labs: 31

Classrooms Removed: 16

**NET CLASSROOMS: 15**

### Freestyle & Alta Vista

The number of classrooms provided in the master plan for the Freestyle Academy of Communication Arts & Technology and Alta Vista High School remain unchanged.

# High School Classroom and Support Space Comparison

Classroom counts and areas below are *after* implementation of the master plan.

	Los Altos High School	Mountain View High School
<b>CLASSROOM COUNT</b>	<b>103</b>	<b>106</b>
<i>*excludes spaces listed under "Support Facilities"</i>		
<b>Classrooms 600 to 800 SF</b>	27	25
<b>Classrooms 801 to 1,300 SF</b>	55	61
<b>Classrooms 1,301 to 2,500 SF</b>	8	7
<b>Science Classrooms</b>	13	13
<b>SUPPORT FACILITIES</b>		
<i>*calculated in gross square footage area</i>		
<b>Cafeteria/Food Service/Food Court</b>	7,940	7,900
<b>Student Union</b>	4,530	4,530
<b>Music</b>	8,620	8,530
<i>*includes the LAHS music building addition, Instrumental, Choral, Marching Band, Ensemble/Practice Spaces, Storage</i>		
<i>**excludes the theater</i>		
<b>Drama Classroom</b>	1,395	1,360
<b>Library</b>	12,990	13,060
<b>Athletics</b>	44,860	41,400
<i>*includes Main Gym, Auxiliary Gym/Multi-Use PE Space, Dance Room, Weight Room(s), Locker Rooms, Wrestling Room</i>		
<i>**excludes fields, outdoor courts, and pool</i>		
<b>TOTAL</b>	<b>80,335</b>	<b>76,780</b>
<i>*excludes classrooms, toilets, and administration</i>		

# Mountain View High School

**3535 Truman Avenue  
Mountain View, CA 94040**

## **School Data**

Date School Opened: 1959

Total Fall 2017 Enrollment: 1,969 students

The work of the Measure A bond program in 2010 provided several improvements.

## **Systems:**

- Upgraded fire alarms
- Upgraded mechanical systems, including air conditioning
- Photovoltaic carports and roof mounted panels.

## **New Construction:**

- 12-new Classrooms
- Pool Replacement and Weight Room

## **Modernization:**

- Boys and Girls Locker Rooms
- Science Building Classroom Conversion
- Library Renovation
- Track & Field Renovations
- Batting Cage Storage Building
- Data Center Expansion
- District Office Renovation



# Mountain View HS Existing Campus

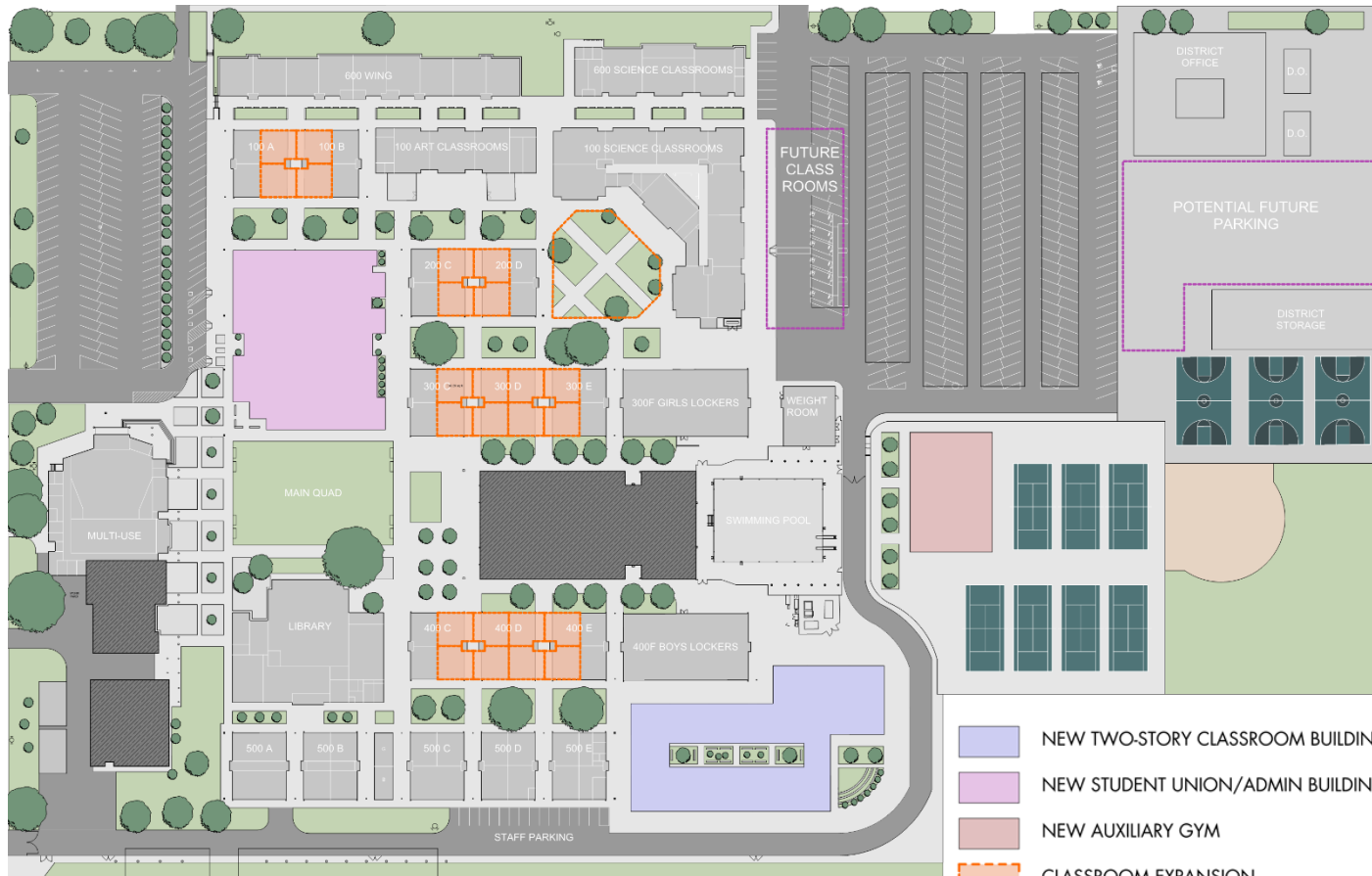
## MVHS PROGRAM NEEDS

- Classrooms for Growth
- Student Services Space
- Student Union
- Special Education
- Wellness Center
- Flexible Meeting Rooms/Testing
- Performing Arts Classrooms
- Auxiliary Gym

## MVHS FACILITY ASSESSMENT NEEDS

- Replace Obsolete Portables
- Roof/Plumbing/HVAC
- Food Service/Kitchens
- Accessibility Improvements
- Storm Drainage
- Signage
- Select Synthetic Turf Field

# MVHS Master Plan



## NEW CONSTRUCTION

- New Classroom Building
- New Student Services Building
- New Auxiliary Gym

## MODERNIZATIONS AND IMPROVEMENTS

- Repurpose Cafeteria into Performing Arts Classrooms
- Modernize Packard Hall
- Alterations and repurposing of Current Small Gym
- Site Improvements
- Future Area for Parking
- Facility Upgrades Outlined in the Facility Assessment Report
- Location for Future Additional Classrooms

- NEW TWO-STORY CLASSROOM BUILDING
- NEW STUDENT UNION/ADMIN BUILDING
- NEW AUXILIARY GYM
- CLASSROOM EXPANSION
- MODERNIZATION
- FACILITY ASSESSMENT UPGRADES
- SITE IMPROVEMENTS
- FUTURE GROWTH



## MVHS NEW CLASSROOM BUILDING

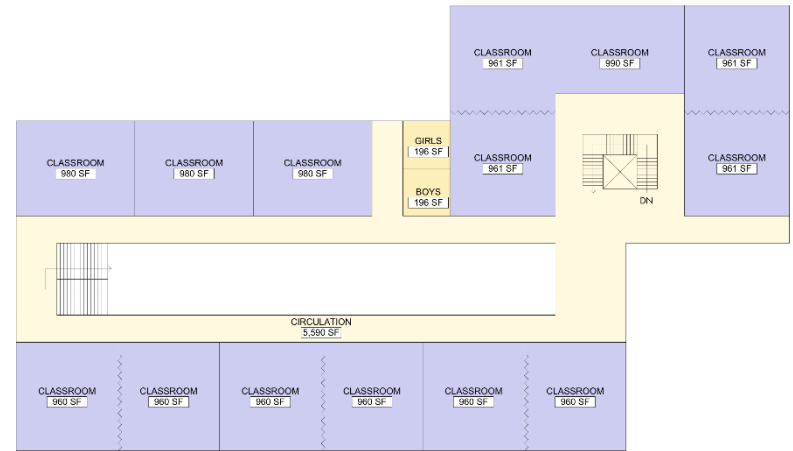
A 40,000 SF new two-story classroom building will meet the demands of currently anticipated increased enrollment and allow for the replacement of obsolete portable classrooms.

- New Classrooms & Labs
- Special Education Spaces
- Support Spaces
- Toilet Rooms
- Outdoor Learning Areas

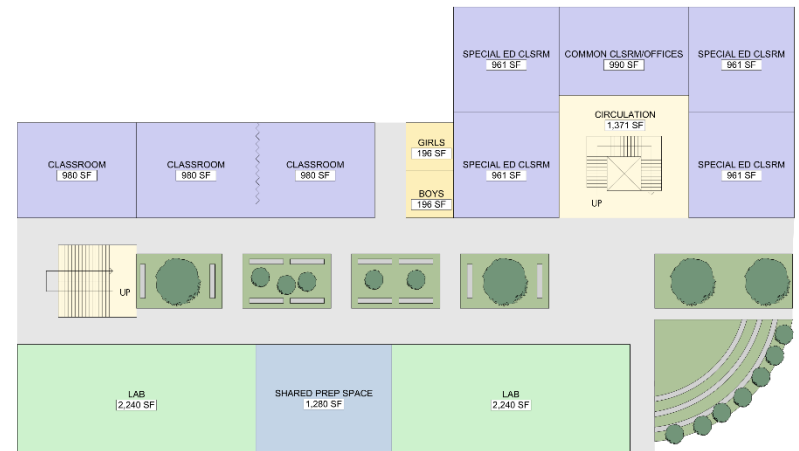
New Classrooms & Labs: 24

Classrooms Removed: 10

**NET CLASSROOMS: 14**



CLASSROOM BUILDING SECOND FLOOR



CLASSROOM BUILDING FIRST FLOOR

## MVHS NEW STUDENT SERVICES BUILDING

The 38,000 SF two-story Student Services building will be the primary point of contact for the public and students. The new building will house student services that are currently spread around the campus with Academic Counseling collocated with the College & Career Center and a Wellness Center. A Student Union will provide dining areas that can be utilized for formal and informal student use such as small group meetings, or extra-curricular activities.

### ADMINISTRATION

- Reception
- Administration Support Spaces
- Principal's Office, Assistant Principals
- Offices for Liaison Psychologist & Resource Officer
- Conference Rooms
- Coordinators and Counselors
- Health Suite
- CHAC
- Registrar and Records
- Attendance
- Bookkeeper

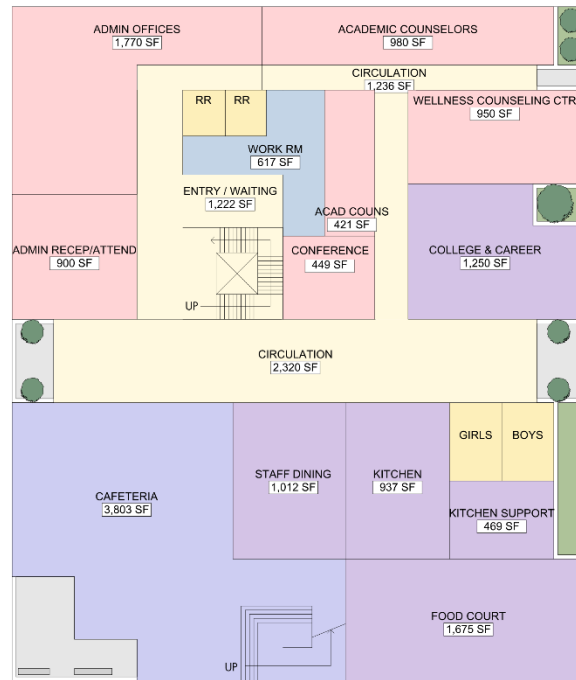
### STUDENT SERVICES

- College & Career Center
- Wellness Center

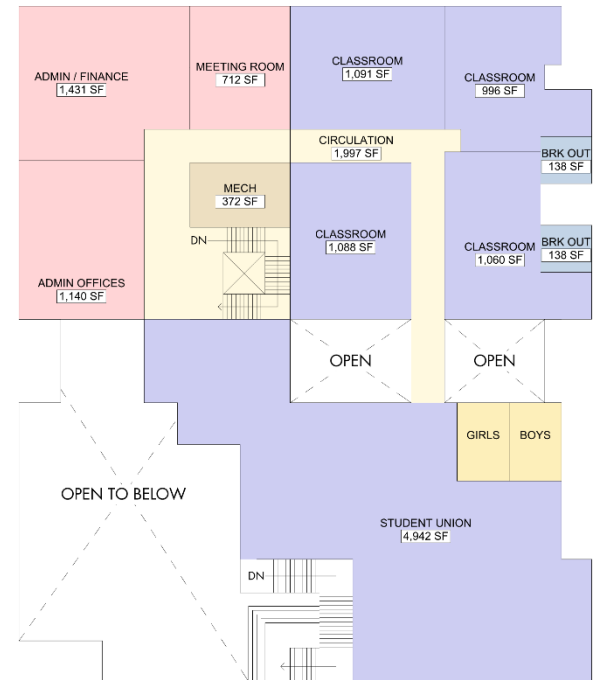
### STUDENT UNION

- Overlooking Cafeteria

New Classrooms: 4  
 Classrooms Removed: 8  
**NET CLASSROOMS: -4**



STUDENT SERVICES FIRST FLOOR



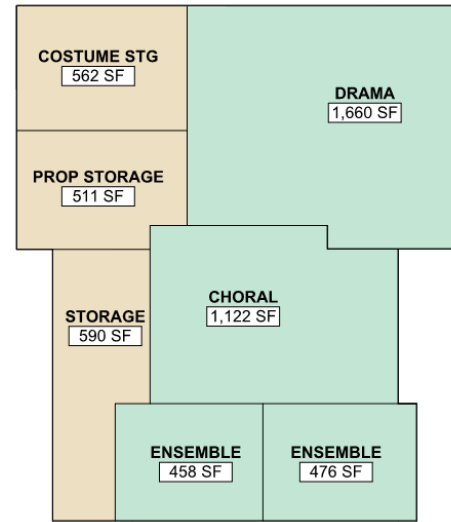
STUDENT SERVICES SECOND FLOOR

### MVHS REPURPOSED CAFETERIA

The existing cafeteria and kitchen spaces will be redesigned to provide a performing arts complex immediately adjacent to the theater. This allows better integration of music/drama/production and will create additional practice spaces for the music program.

- Drama Classroom/ Blackbox
- Costume and Prop Storage
- Choir Room
- Ensemble Spaces

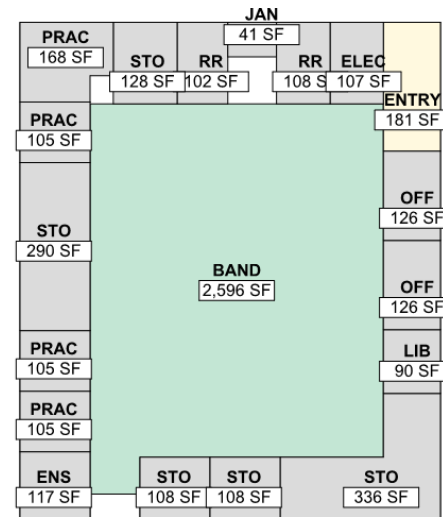
NEW CLASSROOMS:	2
<u>CLASSROOMS REMOVED:</u>	<u>0</u>
<b>NET CLASSROOMS:</b>	<b>2</b>



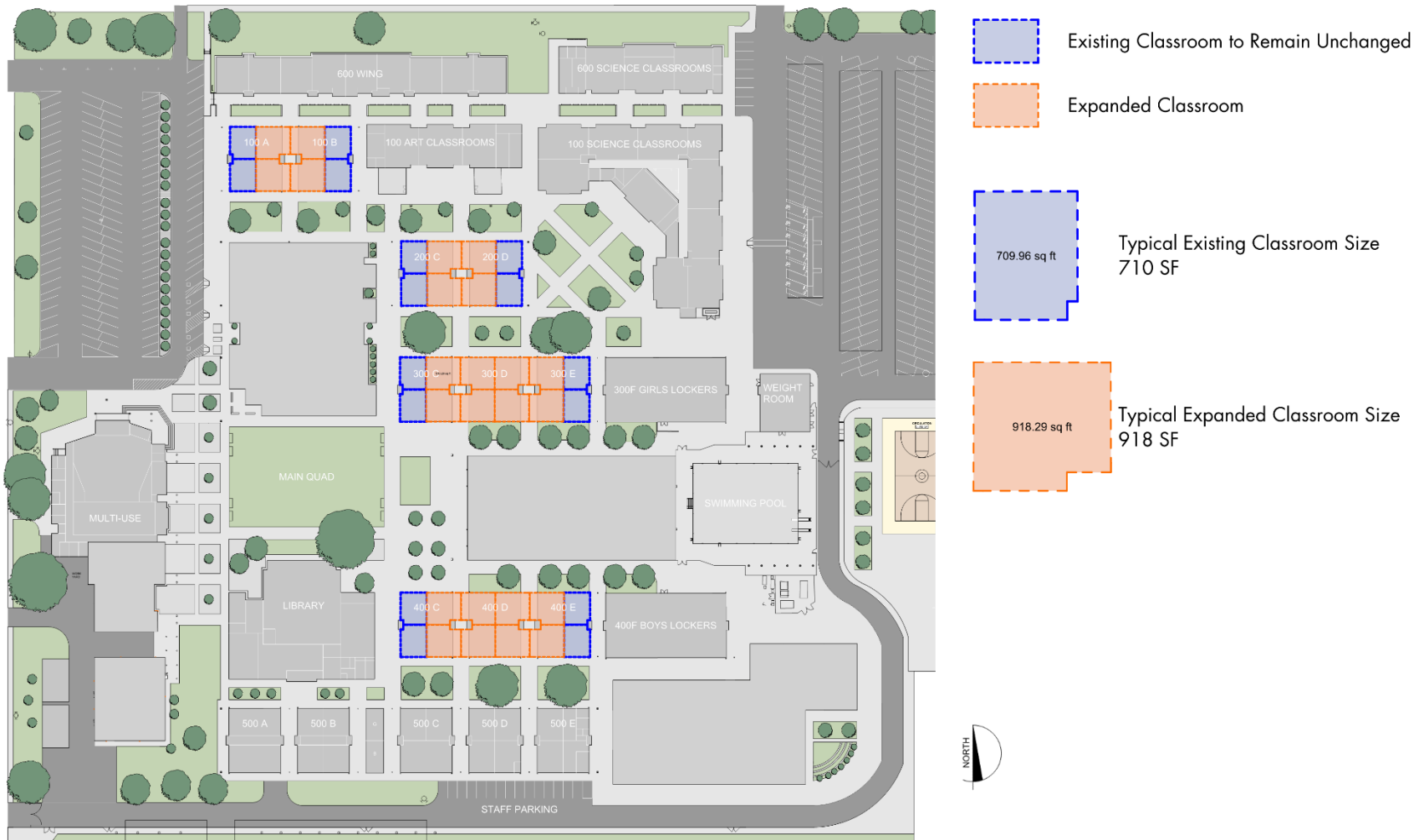
### MVHS MODERNIZE PACKARD HALL

The existing building will be upgraded for acoustics and instructional technology. Additional equipment storage will be provided in the repurposed cafeteria building.

NEW CLASSROOMS:	0
<u>CLASSROOMS REMOVED:</u>	<u>0</u>
<b>NET CLASSROOMS:</b>	<b>0</b>



## MVHS ENLARGE EXISTING CLASSROOMS

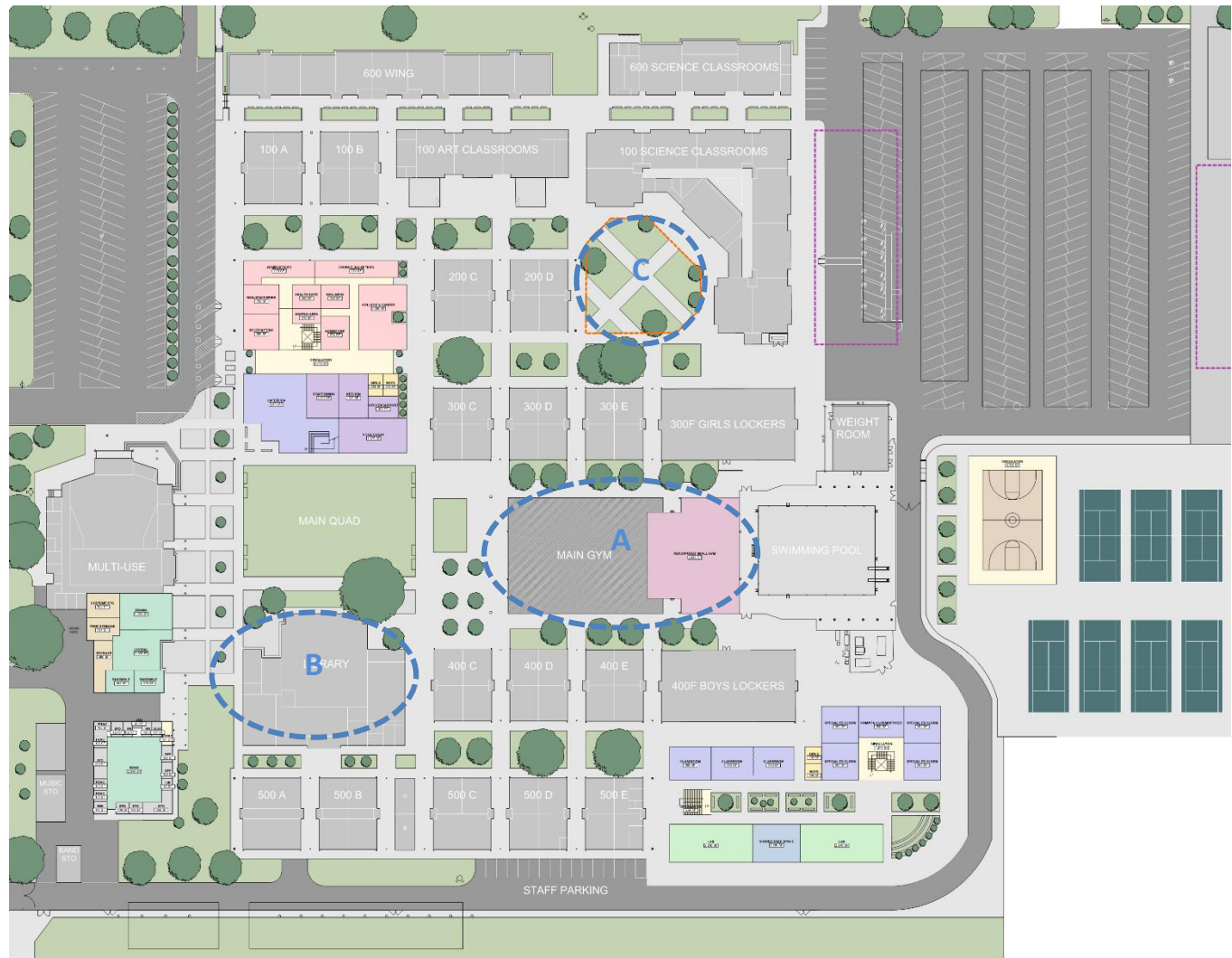


Existing classrooms in the older wings are undersized – approximately 700 SF instead of the standard classroom size of 960 SF. The Master Plan proposes enlarging 24-existing classrooms in the 100 – 400 wings by incorporating the current covered breezeways into the classrooms. An additional 14-classrooms/ labs can be enlarged in the 600-wing by incorporating the current covered breezeways into the classrooms. These potential classroom enlargements require further structural analysis.

**OTHER MVHS SITE PROJECTS**

In addition to the specific projects listed, all existing buildings will receive many of the upgrades noted in the Facilities Assessments. Site improvements for drainage and accessibility are provided.

- A. Modernize Gym – Repurposing or reconfiguring existing second gym for dance, PE classroom, weight room or other uses. Included is Heating, Ventilation, Lighting & ADA upgrades.
- B. Modernize Library – expand services into spaces that have been relocated to the new Student Services Building
- C. Improve Science Courtyard – seating and small group activity areas.
- D. One all-weather synthetic turf field

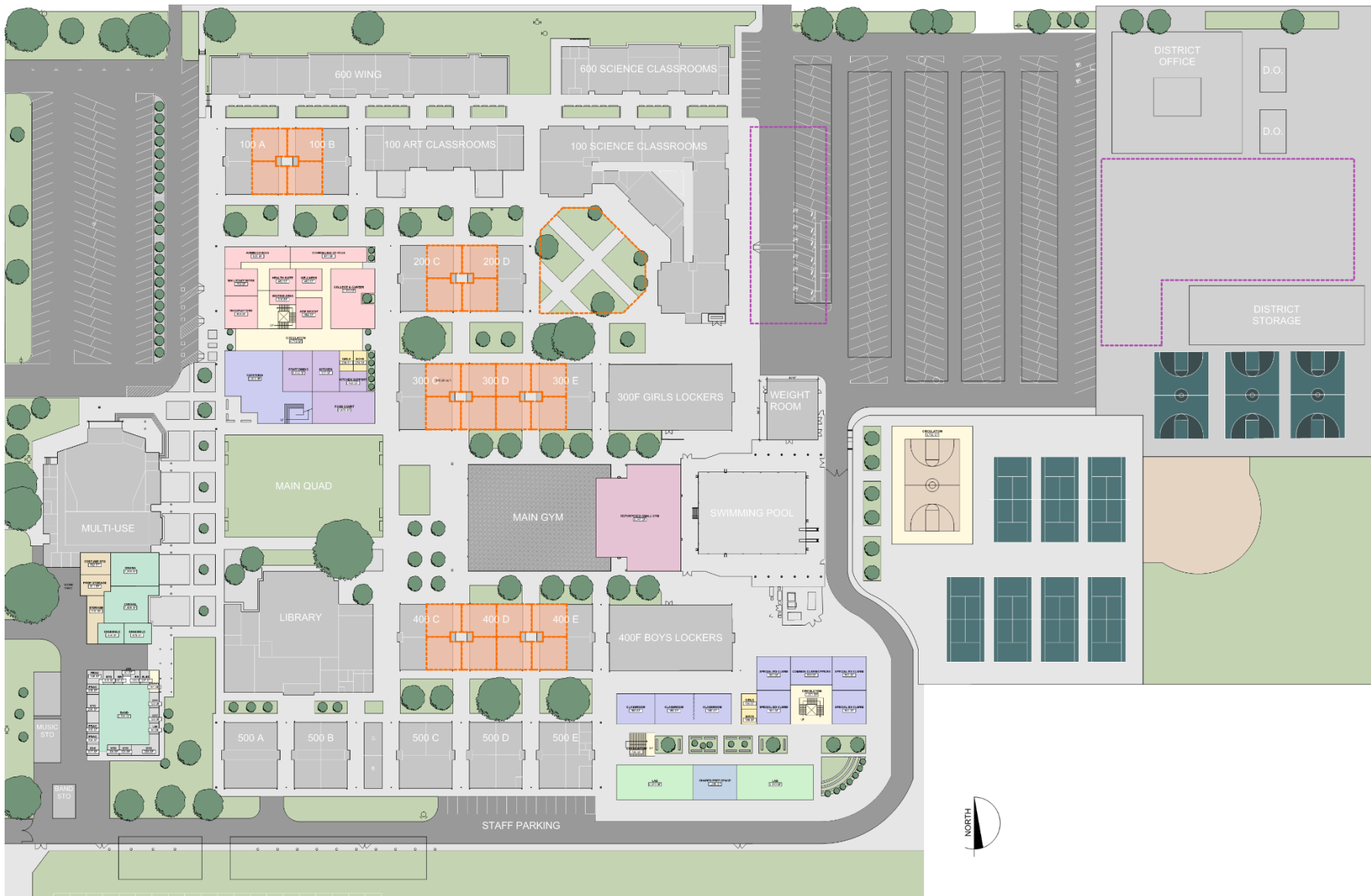


**NEW CLASSROOMS**

- New Aux. Gym & Classroom at repurposed small gym: 1

CLASSROOMS REMOVED: 0

**NET CLASSROOMS:** 1



# MVHS Overall Campus Master Plan

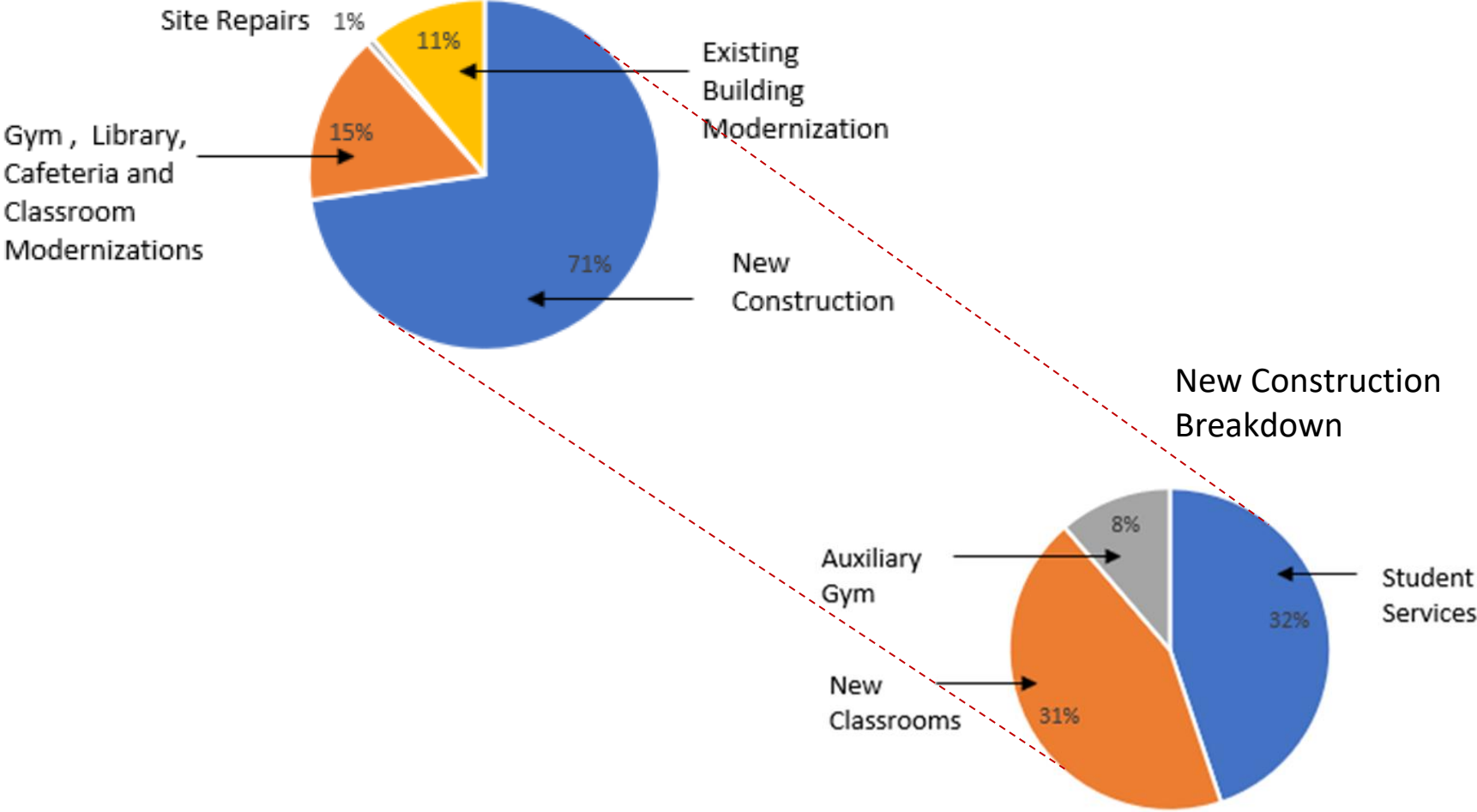
# MVHS Cost Estimate

<b><u>MOUNTAIN VIEW HIGH SCHOOL</u></b>	<b>RECOMMENDED PROGRAM BUDGET</b>	
<b>New Construction</b>	Low Range	High Range
Student Services & Student Union Building	\$ 36,300,000	\$ 39,930,000
Two Story Classroom & Lab Building	\$ 35,500,000	\$ 39,050,000
Auxiliary Gymnasium / Multi-use Facility	\$ 9,175,000	\$ 10,092,500
<b>Building Modernization</b>		
Gymnasium Modernization	\$ 5,300,000	\$ 5,860,000
Library Modernization	\$ 1,900,000	\$ 2,100,000
Repurpose exist. cafeteria bldg. for Performing Arts	\$ 3,800,000	\$ 4,200,000
Packard Hall modernization	\$ 1,000,000	\$ 1,100,000
Enlarge 24 existing classrooms. 100-400 wings	\$ 7,400,000	\$ 8,140,000
<b>Campus Site Repairs &amp; Improvements</b>		
ADA, Storm, Signage, Courtyard Combined	\$ 750,000	\$ 825,000
Athletic fields improvements - 1-synthetic field	\$ 3,700,000	\$ 4,100,000
<b>Facility Assessment Improvements</b>		
All existing bldgs. Facility Assessment repairs combined*	\$ 12,150,000	\$ 12,150,000
<b>Interim housing and relocation during construction</b>	\$ 1,900,000	\$ 2,100,000
	<hr/>	<hr/>
<b>MVHS TOTAL</b>	<b>\$118,875,000</b>	<b>\$129,637,500</b>

\* Facility Assessment Improvements include roofing, selected window replacement, window shades, upgrades to interior finishes and cabinets, heating and ventilation equipment replacement, and required accessibility improvements. See Facility Assessment worksheets for detailed information.

# MOUNTAIN VIEW HIGH SCHOOL MASTER PLAN

## Breakdown by Type of Construction





**201 Almond Avenue  
Los Altos, CA 94022**

**School Data**

Date School Opened: 1955

Total Fall 2017 Enrollment: 2,234 students

The work of the Measure A bond program in 2010 provided several improvements.

**Systems:**

- Upgraded fire alarms
- Upgraded mechanical systems, including air conditioning.
- Photovoltaic carports and roof mounted panels.

**New Construction:**

- Two-story twelve-classroom building.
- Weight Room

**Modernization:**

- Boys' and Girls' Locker Rooms

# Los Altos High School

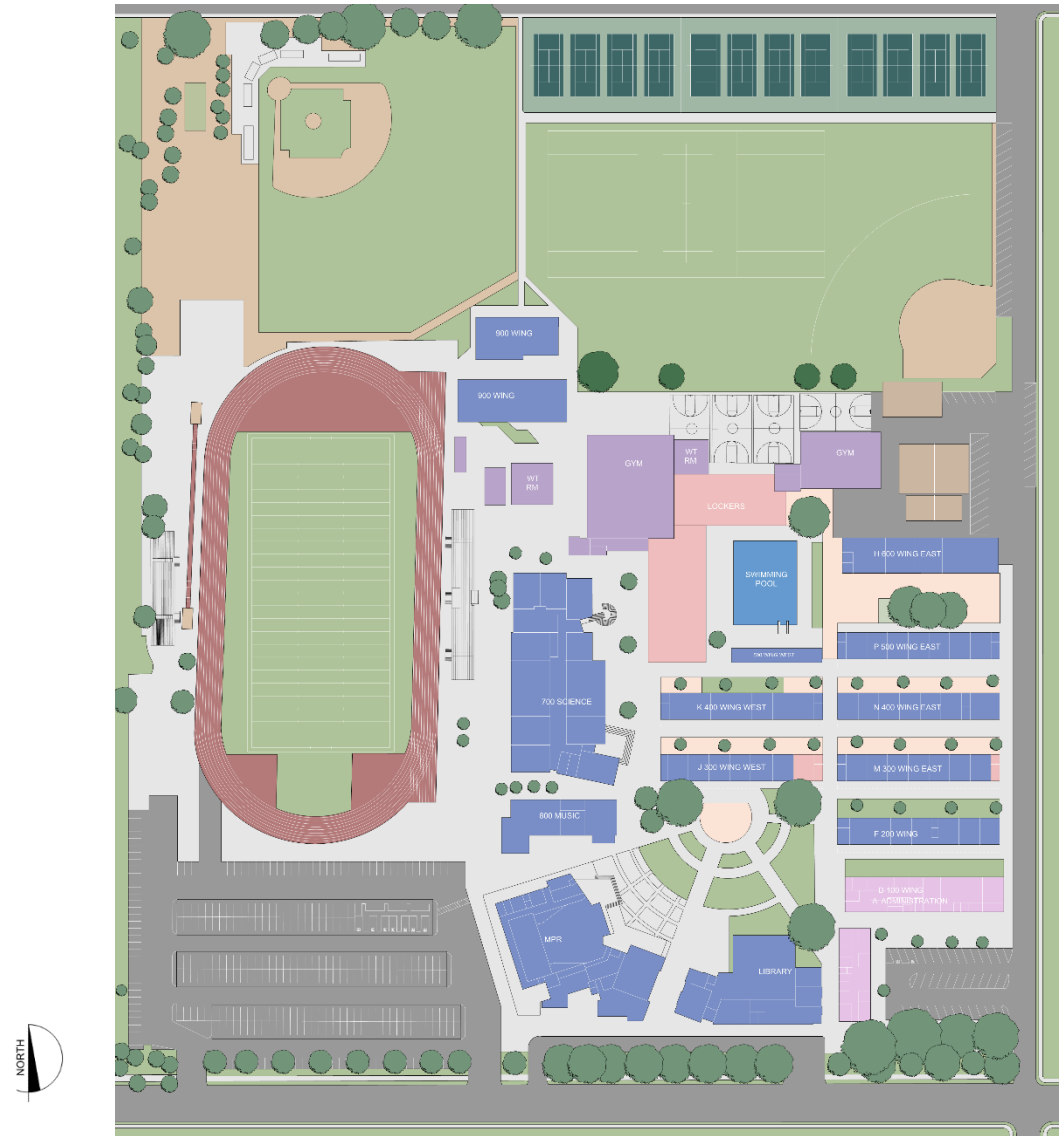
# Los Altos HS Existing Campus

## LAHS PROGRAM NEEDS

- Classrooms for Growth
- Student Services Space
- Student Union
- Special Education
- Wellness Center
- Flexible Meeting Rooms/Testing
- Auxiliary Gym

## LAHS FACILITY ASSESSMENT NEEDS

- Replace Aging Portables
- Roof/Plumbing/HVAC
- Food Service/Kitchens
- Accessibility Improvements
- Storm Drainage
- Signage
- Select Synthetic Turf Field






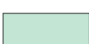




# LAHS Master Plan

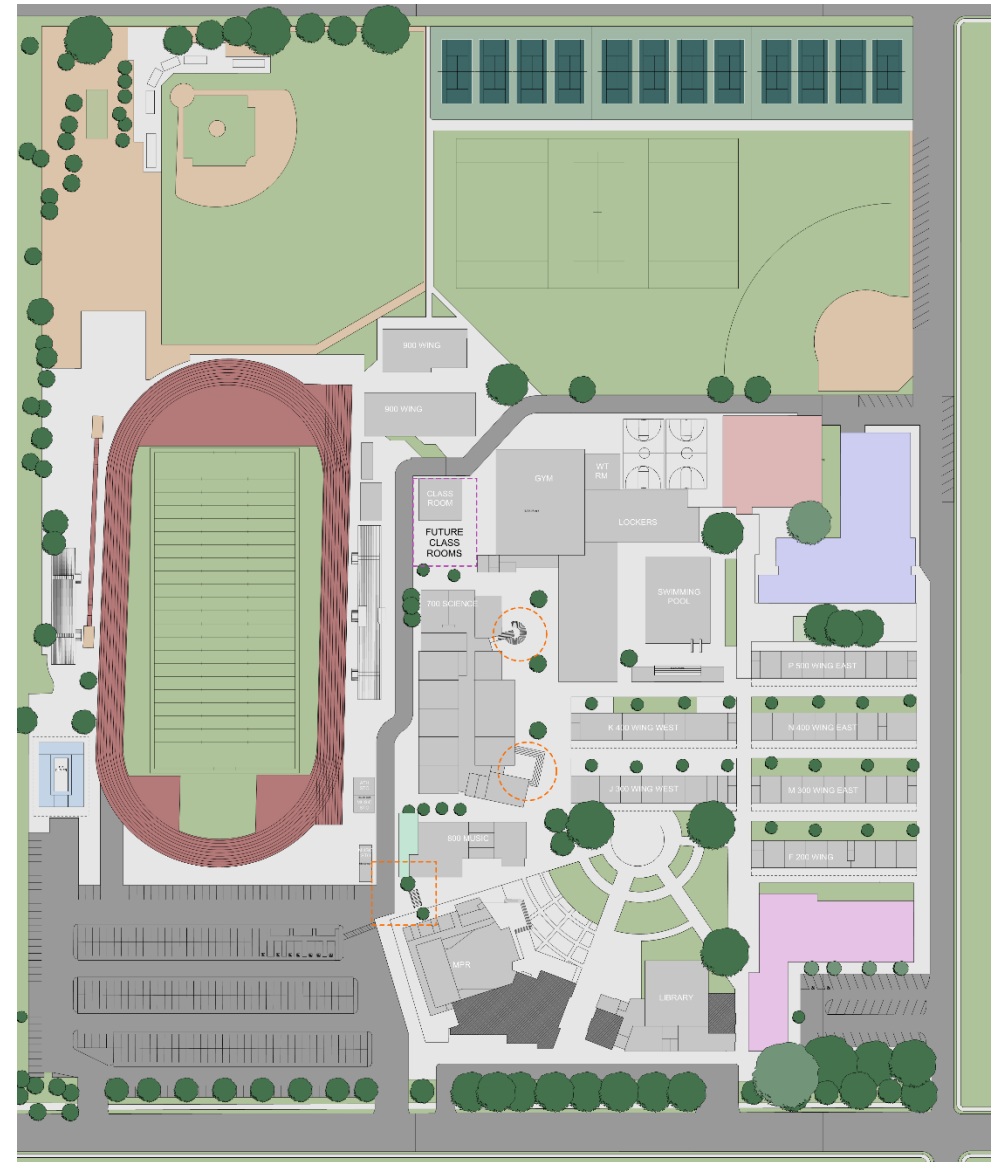
## NEW CONSTRUCTION

- New Student Services Building
- New Classroom Building
  - Keep 2-story construction as far from neighbors as practical
- New Auxiliary Gym

## MODERNIZATIONS AND IMPROVEMENTS

- Improved Campus Entry
- Music Building Addition
- Enlarged Library (into vacated spaces)
- Enlarged and Improved Cafeteria (repurpose spaces)
- Site Improvements

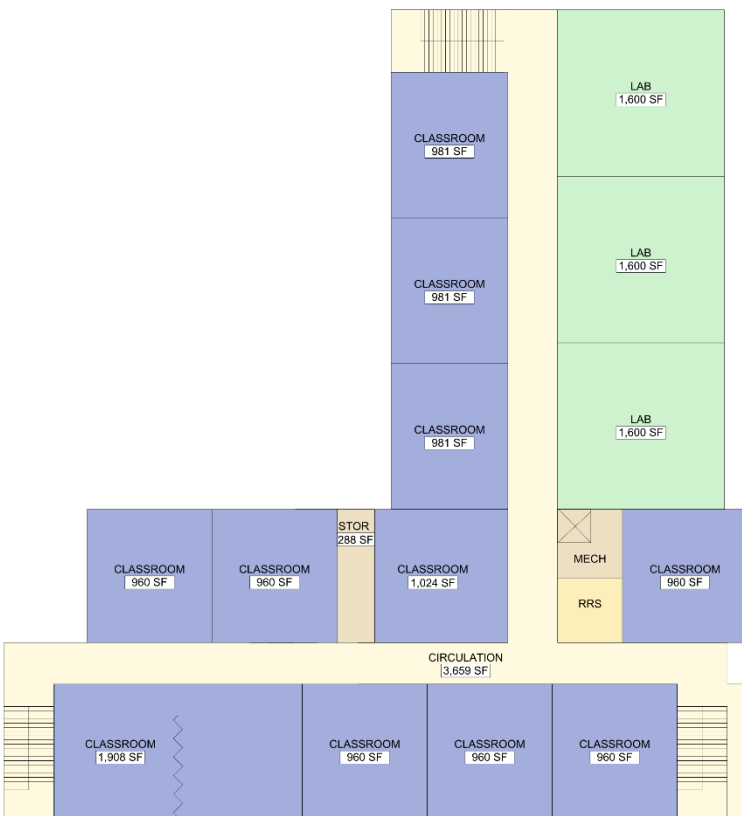
-  NEW TWO-STORY CLASSROOM BUILDING
-  NEW STUDENT UNION/ADMIN BUILDING
-  NEW AUXILIARY GYM
-  NEW MUSIC BUILDING ADDITION
-  MODERNIZATION
-  FACILITY ASSESSMENT UPGRADES
-  SITE IMPROVEMENTS
-  FUTURE GROWTH



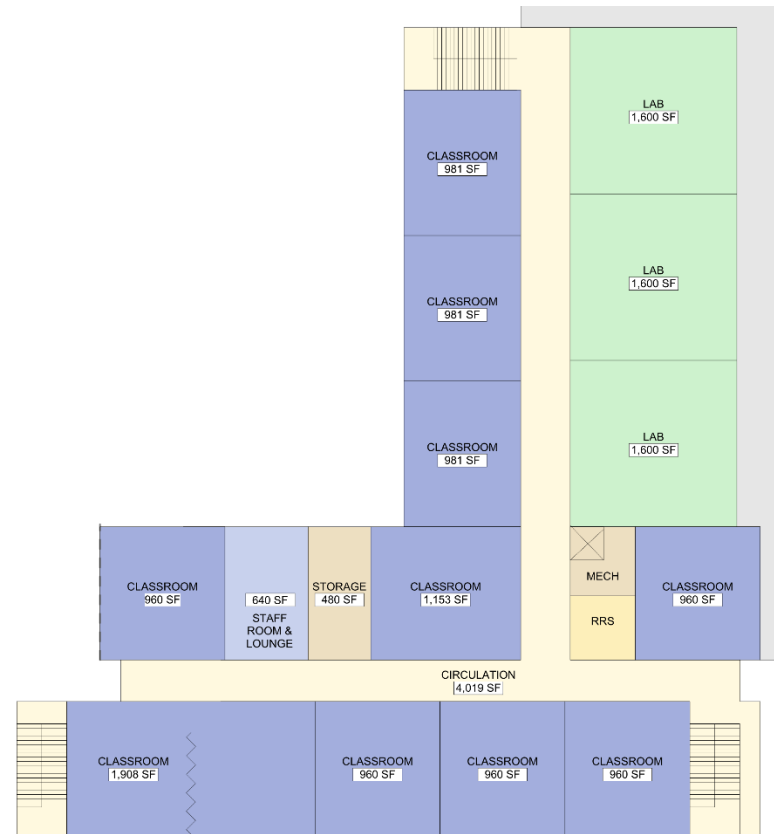
## LAHS NEW CLASSROOM BUILDING

A new 40,000 SF two-story classroom building will meet the demands of increased enrollment and allow for the replacement of dilapidated portable classrooms. Seek building designs that keep two-story construction as far from neighboring homes as practical.

New Classrooms/ Labs:	29	• New Classrooms & Labs
Classrooms Removed:	12	• Support Spaces
<b>NET CLASSROOMS:</b>	<b>17</b>	• Toilet Rooms



CLASSROOM BUILDING FIRST FLOOR



CLASSROOM BUILDING SECOND FLOOR

## LAHS NEW STUDENT SERVICES BUILDING

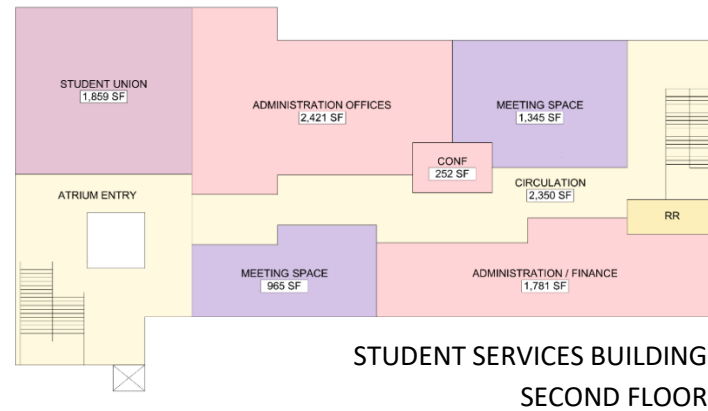
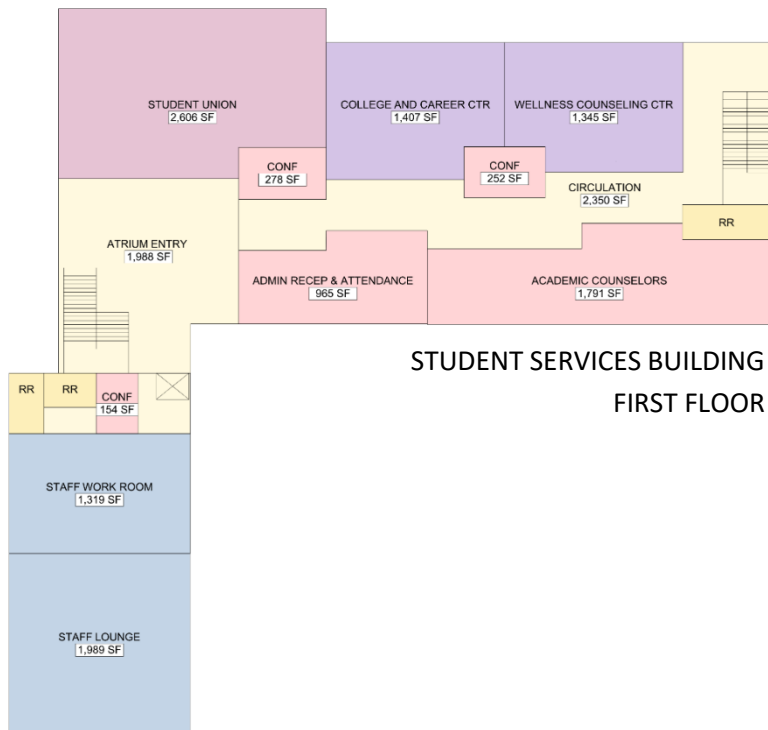
The 28, 640 SF Student Services building will be the primary point of contact for the public and houses administrative services for the students, with Academic Counseling collocated with the College & Career Center and a Wellness Center. A Student Union will provide areas that can be utilized for formal and informal student use such as small group meetings, or extra-curricular activities.

### ADMINISTRATION

- Reception
- Administration Support Spaces
- Principal's Office, Assistant Principals
- Conference Rooms
- Coordinators and Counselors
- Health Suite
- Registrar and Records
- Attendance
- Bookkeeper
- Psychologist & Resource Officer Offices
- CHAC

### STUDENT SERVICES

- College & Career Center
- Wellness Center
- Student Union

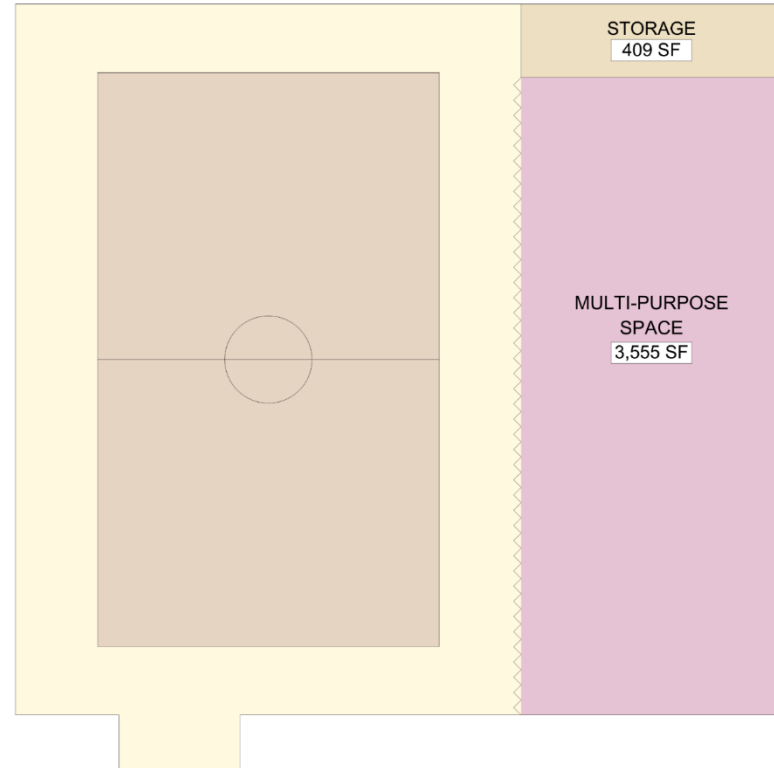


New Classrooms/ Labs:	1
<u>Classrooms Removed:</u>	<u>4</u>
<b>NET CLASSROOMS:</b>	<b>-3</b>

**LAHS AUXILIARY GYM**

- 50'x84' basketball court for athletic/PE space
- Multi-Purpose Space Uses Include:
  - Gymnastics
  - Movement/ Exercise
  - Testing
  - Performing Arts
  - Can be divided with moveable wall

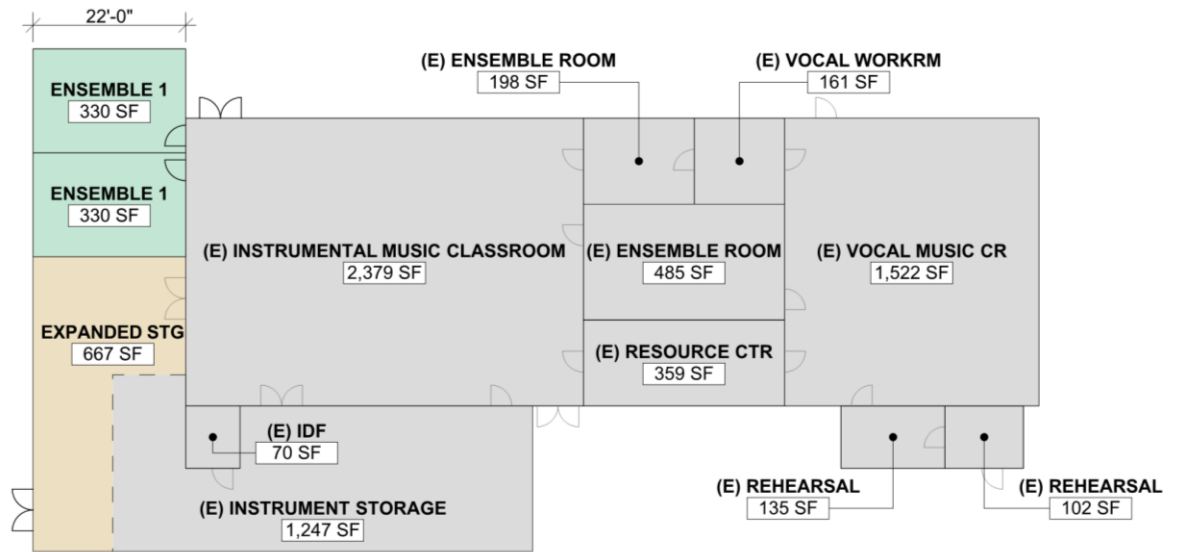
New Teaching Space:	1
<u>Classrooms Removed:</u>	<u>0</u>
<b>NET CLASSROOMS:</b>	<b>1</b>



## LAHS MUSIC BUILDING ADDITION

The 1,330 SF addition to the existing Music Building will provide additional space for ensemble breakout groups, plus additional storage.

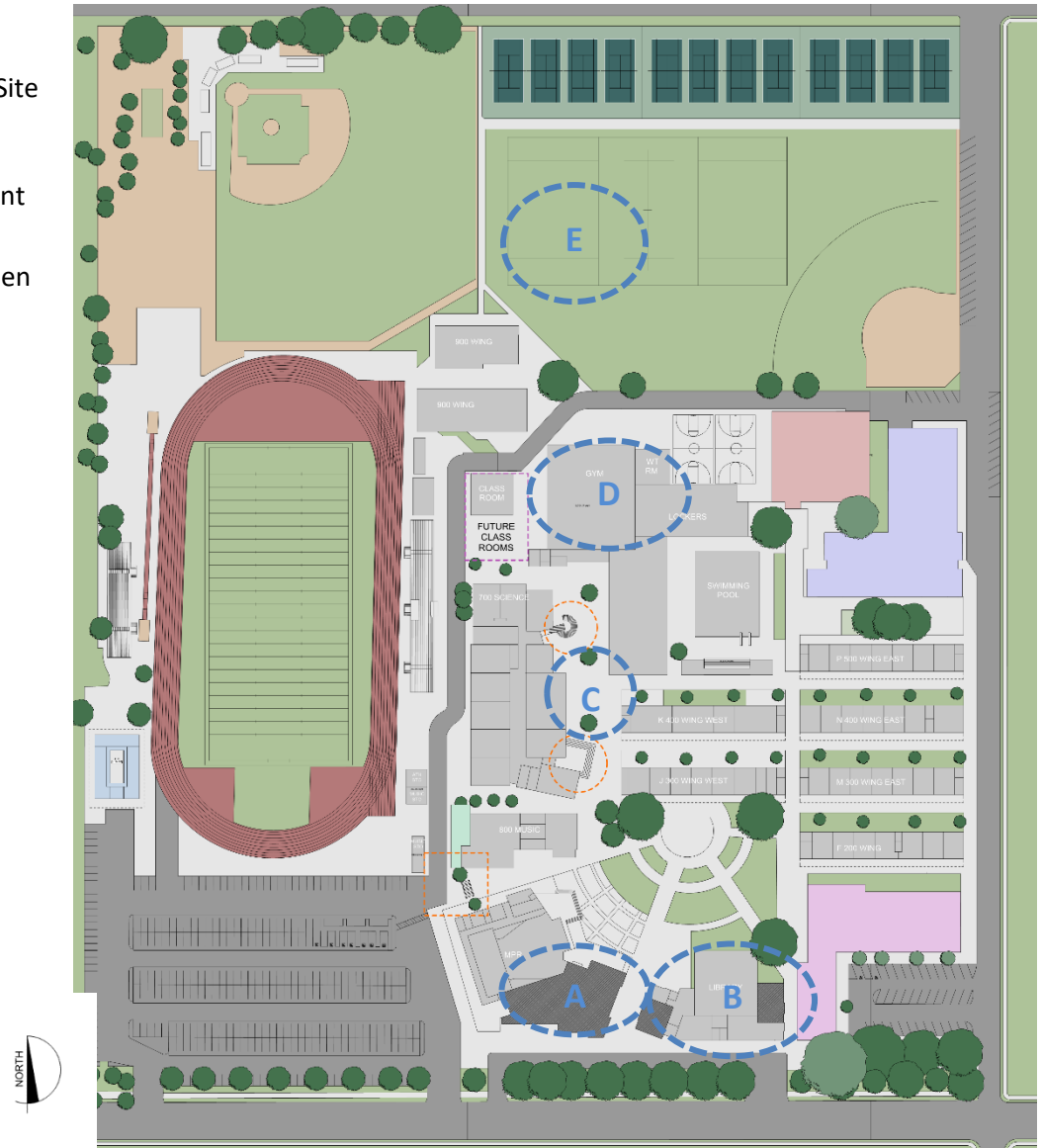
- Two additional ensemble rooms
- Expansion of the existing instrument storage room



## OTHER LAHS SITE PROJECTS

In addition to the specific projects listed, all existing buildings will receive many of the upgrades noted in the Facilities Assessments. Site improvements for drainage and accessibility are also provided.

- A. Reconfigure Cafeteria and Food Services to be more efficient and to expand into spaces relocated to Student Services.
- B. Expand Library / Tutoring services into spaces that have been relocated to the new Student Services Building
- C. Replace Building 700 exterior stairs
- D. Modernize Gym / new bleachers (ADA)
- E. One all-weather synthetic turf field







# LAHS Overall Campus Master Plan

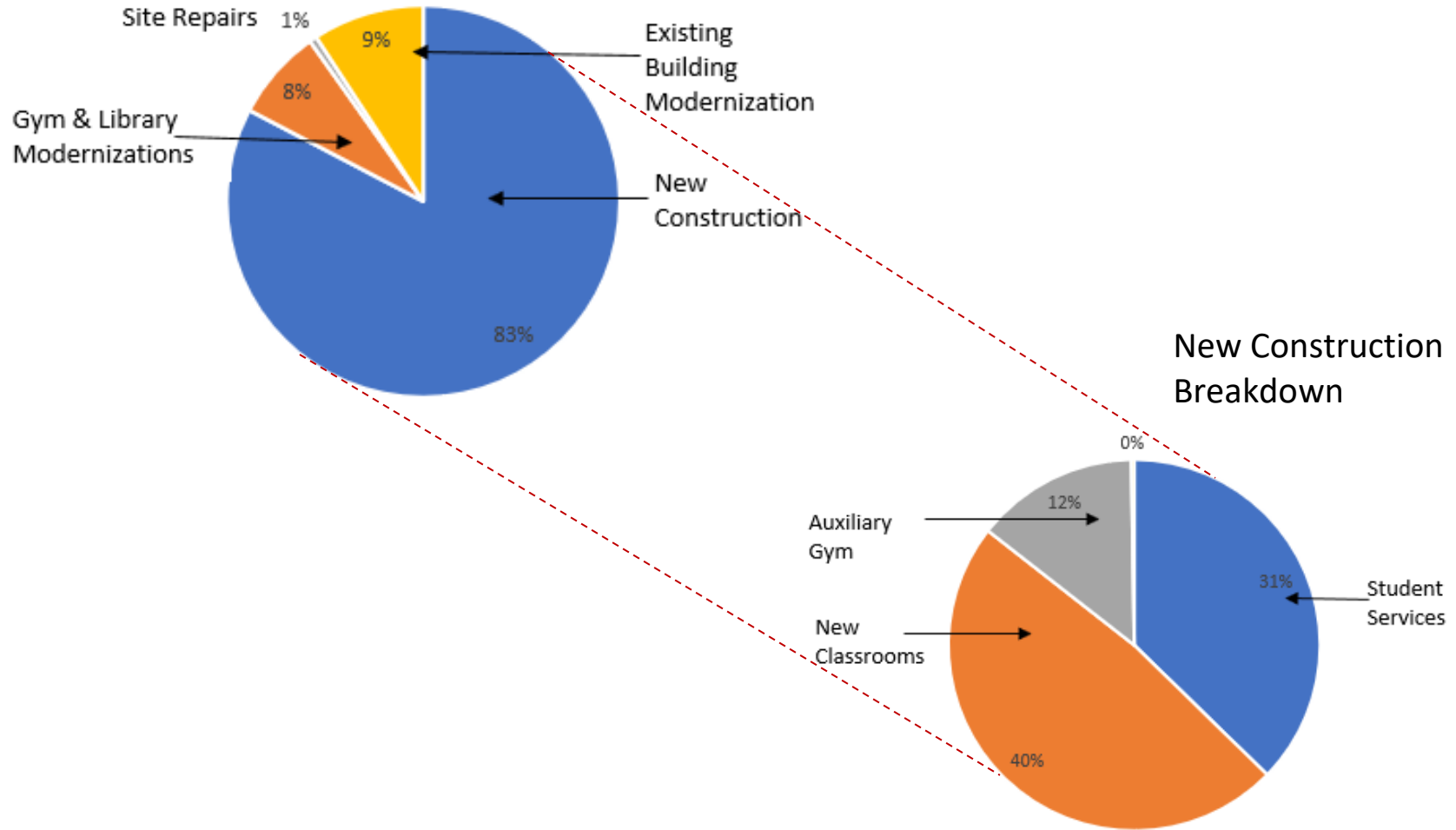
# LAHS Cost Estimate

<u>LOS ALTOS HIGH SCHOOL</u>	<b>RECOMMENDED PROGRAM BUDGET</b>	
<b>New Construction</b>	Low Range	High Range
Student Services & Student Union Building	\$ 29,600,000	\$ 32,560,000
Two Story Classroom Building	\$ 38,300,000	\$ 42,130,000
Auxiliary Gym / Multi-use Facility	\$ 11,250,000	\$ 12,500,000
500 Wing West – Minor repair.	\$ 200,000	\$ 220,000
Music Building Addition	\$ 950,000	\$ 1,045,000
<b>Building Modernization</b>		
Existing Gymnasium modernization	\$ 3,200,000	\$ 3,520,000
Existing Library modernization	\$ 1,700,000	\$ 1,870,000
Kitchen cafeteria building modernization	\$ 3,800,000	\$ 4,200,000
<b>Campus Site Repairs &amp; Improvements</b>		
ADA, Storm Drainage, Signage, Stairs Combined	\$ 580,000	\$ 640,000
Athletic fields improvements – 1-Synthetic Field	\$ 3,700,000	\$ 4,100,000
<b>Existing building repairs &amp; improvements</b>		
All existing bldgs. Facility Assessment repairs combined *	\$ 5,953,000	\$ 5,953,000
<b>Interim housing and relocation during construction</b>	\$ 2,850,000	\$ 3,150,000
<b>LAHS TOTAL</b>	<b>\$102,083,000</b>	<b>\$111,888,000</b>

\* Facility Assessment Improvements include roofing, selected window replacement, window shades, upgrades to interior finishes and cabinets, heating and ventilation equipment replacement, and required accessibility improvements. See Facility Assessment worksheets for detailed information.

# LOS ALTOS HIGH SCHOOL MASTER PLAN

## Breakdown by Type of Construction



**1299 Bryant Street  
Mountain View CA 94040**

**School Data:**

Date Academy Opened: 2006

Total Enrollment 2015: 144 maximum

# Freestyle Academy of Communication Arts & Technology

The Freestyle Academy of Communication Arts & Technology is a dedicated arts program available to juniors and seniors from Mountain View, Los Altos, and Alta Vista Continuation high schools. Their goal is *“to prepare students to live, learn, and work successfully in today's knowledge-based digital society, (the) emphasis at Freestyle Academy will be on developing 21st Century Skills”*.

The Facilities Assessment for Freestyle recommends complete replacement of aging portables currently housing the Academy. A new facility will provide easier maintenance, full accessibility and energy efficiency as well as meeting the needs of the instructional program.

In current discussions, the District is seeking approval from the City of Mountain View to located Freestyle Academy at the entry drive to Alta Vista. The new property must accommodate a future pedestrian ramp over the freeway, leaving approximately 18,500 square feet potentially available for District use.

After looking at the potential use of the property for additional district offices, warehouse uses and parking as well as classrooms it was determined that this City owned property would best house new construction for Freestyle Academy. This reinforces their unique identity and provides appropriate classroom spaces. The previous abandoned location would then become available to the District for expansion of parking, MVHS classrooms or other District needs as identified.



# Freestyle Academy Master Plan

## Academy Program Allocations

The following are guidelines for areas to adequately meet the educational program of Freestyle Academy. The District Education Specifications document provides further detail on the Freestyle program.

### Audio CR & Lab

+ Recording Studio + Control Room + Storage

### Film CR & Lab

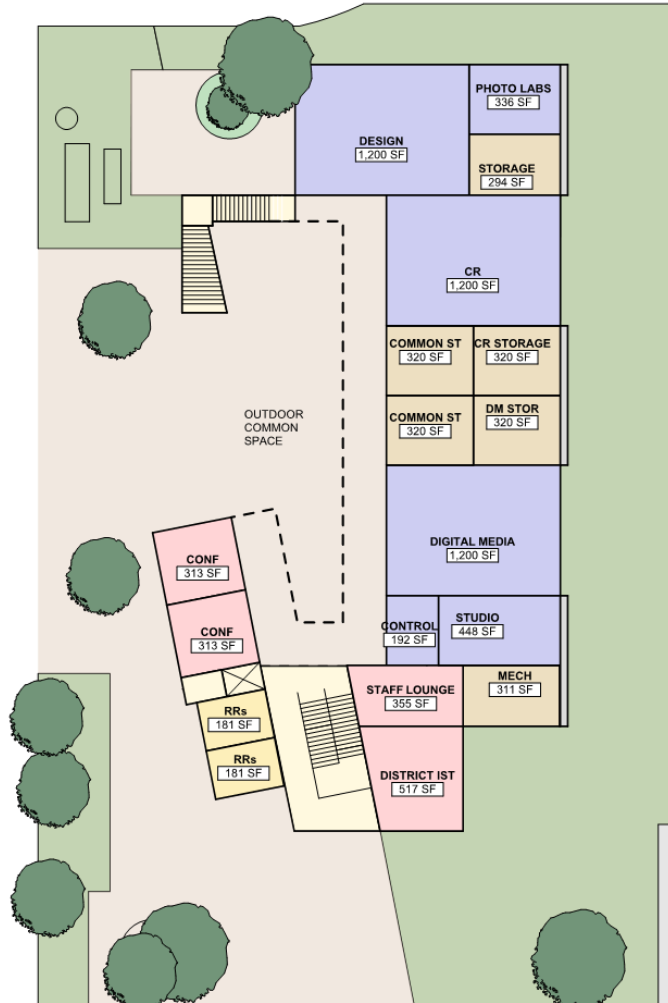
+ Recording Studio + Control Room + Storage

### Digital Media CR & Lab

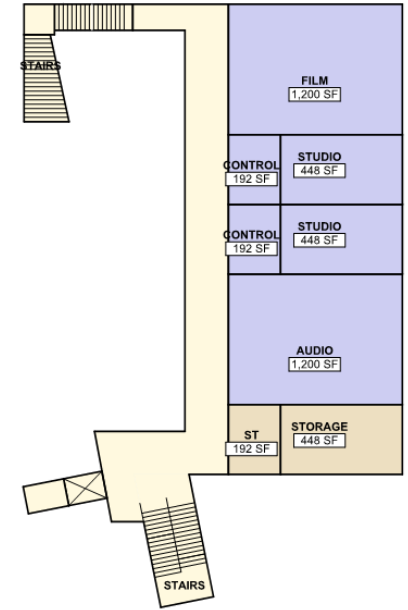
+ Recording Studio + Storage

### Design CR

+ Photo Labs and Work Area + Storage



FIRST LEVEL AND SITE PLAN



SECOND LEVEL PLAN

## FREESTYLE ACADEMY

## RECOMMENDED PROGRAM BUDGET

	Low Range	High Range
New Freestyle Academy	\$ 14,320,000	\$ 15,750,000

**1325 Bryant Avenue  
Mountain View CA 94040**

**School Data**

Date School Opened: 2005

Total Enrollment 2015: 100 students

Number of Classrooms: 10

# Alta Vista High School

# Alta Vista HS Existing Campus

Alta Vista High School provides an education program per the requirements of the California Education Code, to ensure that at-risk students graduate from high school. In addition to the academic program for graduation credits there are numerous intensive guidance and counseling services offered.

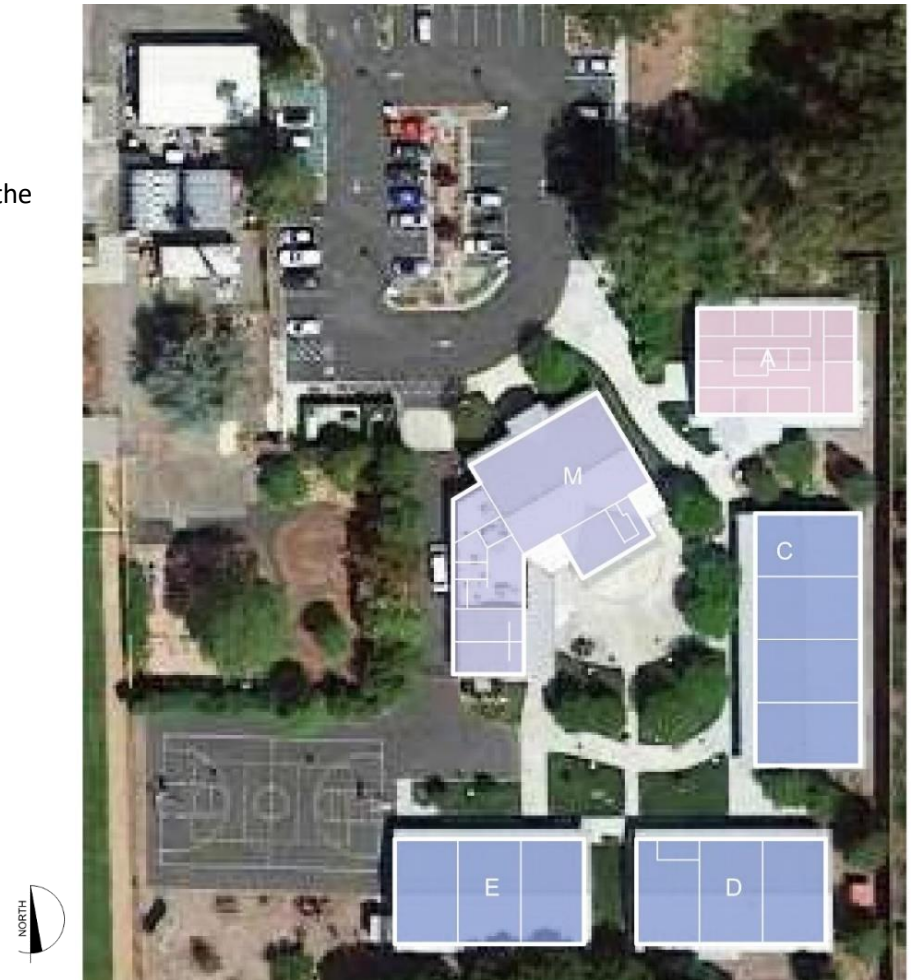
When looking at altered spaces, an emphasis on flexibility and adaptability of spaces within an efficient and well-balanced building program is essential.

## AVHS PROGRAM NEEDS

- Flexible Small Group Meeting spaces
- Exterior spaces for student use
- Integrated Wellness Center
- Dedicated Storage

## AVHS FACILITY ASSESSMENT NEEDS

- Roof replacement
- Accessibility Improvements
- Exterior Lighting
- Window Shades



## ALTA VISTA

## RECOMMENDED PROGRAM BUDGET

	Low Range	High Range
Facility Assessment Repairs and Improvements (To Be completed with other District Funds)	<b>\$ 1,074,000</b>	<b>\$ 1,187,000</b>



**333 Moffett Blvd  
Mountain View, CA 94043**

**School Data:**

Date Opened: 1991

# MVLA Adult Education Center

# Adult Education Existing Campus

MVLA Adult Education provides numerous services to students in grades 9-12 and to adults. Instructional methodology includes small group, lecture, project based, software centric and hands on learning.

## ADEC PROGRAM NEEDS

- Flexible Meeting spaces of varying sizes
- Tutoring Center
- Exterior spaces for student use
- Dedicated Storage
- Access to additional parking

## ADEC FACILITY ASSESSMENT NEEDS

- Roof replacement
- Accessibility Improvements
- Daylight / sun control
- Exterior Lighting
- Interior finishes upgraded



## ADULT EDUCATION

## RECOMMENDED PROGRAM BUDGET

	Low Range	High Range
Facility Assessment Repairs and Improvements (To Be completed with other District Funds)	<b>\$760,000</b>	<b>\$840,000</b>



MVLA District Office

**District Office**

1299 Bryant Avenue

Mountain View, CA 94040

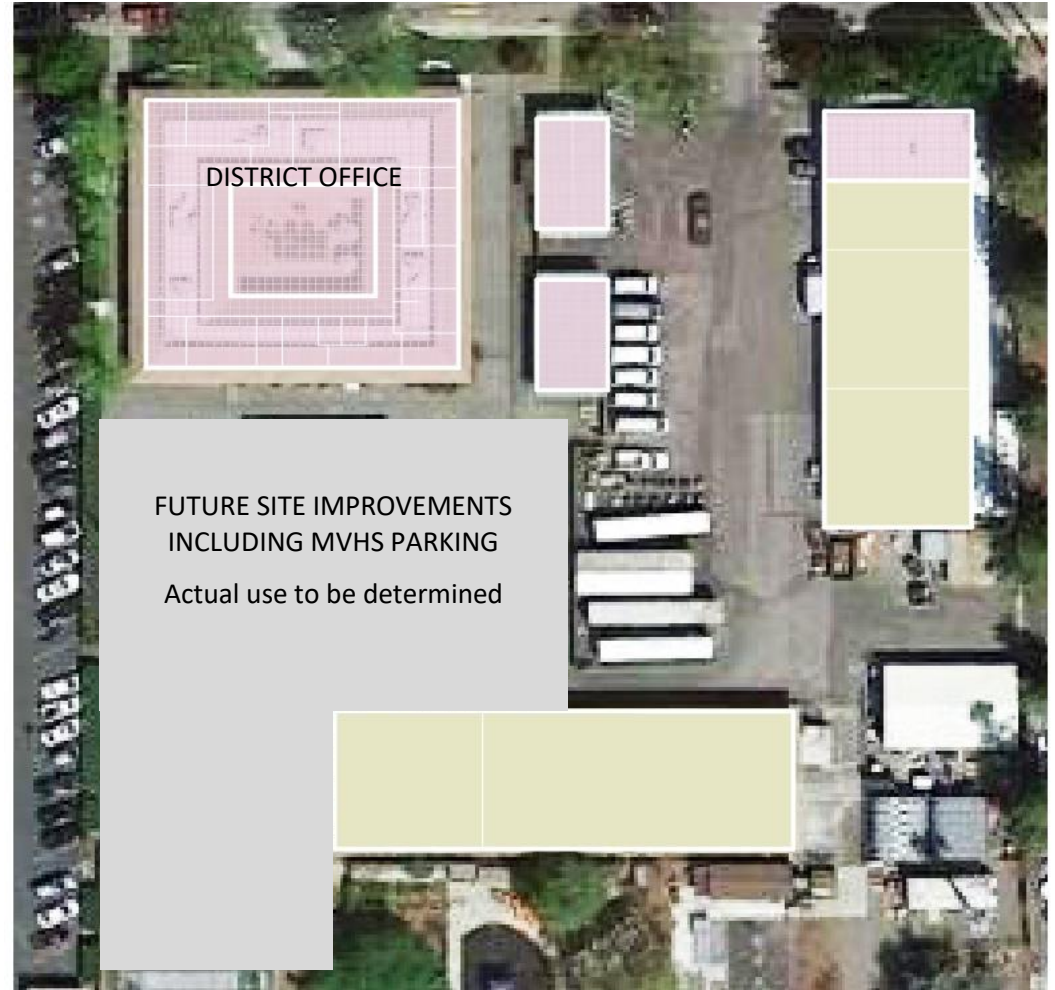
# District Office Existing Site

## DISTRICT OFFICE PROGRAM NEEDS

- Large Flexible Meeting / Training space
- Integrated Program Offices

## DISTRICT OFFICE ASSESSMENT NEEDS

- Replacement of portables
- Roof Repair
- Accessibility Improvements



## DISTRICT OFFICE

### Recommended Program Budget

	Low Range	High Range
Facility Assessment Repairs and Improvements (To Be completed with other District Funds)	<b>\$ 285,000</b>	<b>\$ 315,000</b>